

# HABIGRAM



**Habitat  
for Humanity  
of Johnson County**

*The Quarterly Newsletter For All Things Habitat*

## MEET OUR BOARD MEMBERS

Thanks to this dedicated team of hard-working men & women, Habitat for Humanity of Johnson County is able to build houses in partnership with people in need & advocate for affordable housing.



Eric Prime, President



Joe Waltermann, VP



**Habitat  
for Humanity  
of Johnson County**

– Board of Directors –



Wendy McClellan, Secretary



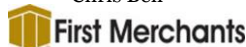
Robert Jessie, Treasurer



Maribeth Alspach



Chris Beil



Mike Bushong  
Retired *Leely*



Melissa Duke



Jim Gray



Elaine Pesto



Jeremy Peters



Marti Wooden

Retired

### Mission Statement:

*Habitat for Humanity of Johnson County is a nonprofit Christian organization that works in partnership with families under the conviction that every person should have a simple, decent, affordable place to live in safety and dignity.*



401 Mooreland Drive, New Whiteland, IN 46184  
(317) 530-9222 • [www.habitatjohnsoncounty.org](http://www.habitatjohnsoncounty.org)



# HABIGRAM



**Habitat  
for Humanity  
of Johnson County**

*The Quarterly Newsletter For All Things Habitat*

## WE ARE HIRING!

If you are looking for a part-time job working with amazing people,  
stop by our ReStore to pick up an application!

**6720 N. US 31, New Whiteland, IN 46184**



***Come Join Our Team***

If you are looking for a fun place to work with great people,  
stop by and pick up an application.

**Currently Hiring - P/T Associates  
Back of the Store/Box Truck Driver - \$12/hr**

General Qualifications & Duties

- One to two days for donation pick-ups and backroom help with occasional Saturday - approximately 25-30 hours/week
- Must be able to lift up to 50 pounds
- Assist getting merchandise on sales floor
- Must be able to stand extended periods of time
- Must have a friendly, helpful demeanor with excellent customer service skills and a servant heart for Habitat
- Must have valid driver's license and clean driving record
- Box truck driving experience a plus

Applications available during business hours at the:

Habitat ReStore  
6720 N. US 31  
Whiteland, IN 46184

No Phone Calls or Walk-In Interviews  
Habitat for Humanity of Johnson County is an Equal Opportunity Employer



***Come Join Our Team***

If you are looking for a fun place to work with great people,  
stop by and pick up an application.

**Currently Hiring - P/T Associates  
Back of Store - \$10/hr**

General Qualifications & Duties

- Assist with donation pick-ups and work in back of store for in-take of donations - approximate 25 hours/week with occasional Saturday
- Must be able to lift up to 50 pounds
- Must be able to stand extended periods of time
- Must have a friendly, helpful demeanor with excellent customer service skills and a servant heart for Habitat

Applications available during business hours at the:

Habitat ReStore  
6720 N. US 31  
Whiteland, IN 46184

No Phone Calls or Walk-In Interviews  
Habitat for Humanity of Johnson County is an Equal Opportunity Employer



***Come Join Our Team***

If you are looking for a fun place to work with great people,  
stop by and pick up an application.

**Currently Hiring - P/T Associate  
Front of Store - \$10/hr**

General Qualifications & Duties

- Thursday & Friday position with occasional Saturday
- Experience in retail or customer service environment helpful
- Knowledge of cash register and credit card machine helpful
- Assist getting merchandise on sales floor
- Must be able to stand extended periods of time
- Must have a friendly, helpful demeanor with excellent customer service skills and a servant heart for Habitat

Applications available during business hours at the:

Habitat ReStore  
6720 N. US 31  
Whiteland, IN 46184

No Phone Calls or Walk-In Interviews  
Habitat for Humanity of Johnson County is an Equal Opportunity Employer

**Shop   Donate   Volunteer**

### Part-Time Back of Store/Box Truck Driver - \$12/hr

- 1 -2 days for donation pick-ups & backroom help with occasional Saturday – approx. 25 – 30 hrs/wk
- Must be able to lift up to 50 lbs
- Assist getting merchandise on sales floor
- Must be able to stand for extended periods of time
- Must have friendly, helpful demeanor with excellent customer service skills & a servant heart for Habitat
- Must have valid driver's license & clean driving record
- Box truck driving experience is a plus

### Part-Time Back of Store - \$10/hr

- Assist with donation pick-ups & work in back of store for in-take of donations with occasional Saturday – approx. 25 hrs/week
- Must be able to lift up to 50 lbs
- Must be able to stand for extended periods of time
- Must have friendly, helpful demeanor with excellent customer service skills & a servant heart for Habitat.

### Part-Time Front of Store - \$10/hr

- Thurs & Fri position with occasional Sat.
- Experience in retail or customer service environment helpful
- Knowledge of cash register & credit card machine helpful
- Assist in getting merchandise on sales floor
- Must be able to stand extended periods of time
- Must have friendly, helpful demeanor with excellent customer service skills & a servant heart for Habitat

**NO PHONE CALLS OR WALK-IN INTERVIEWS**

Habitat For Humanity of Johnson County is an Equal Opportunity Employer



401 Mooreland Drive, New Whiteland, IN 46184  
(317) 530-9222 • [www.habitatjohnsoncounty.org](http://www.habitatjohnsoncounty.org)



# HABIGRAM



**Habitat  
for Humanity**  
of Johnson County

*The Quarterly Newsletter For All Things Habitat*

**ReStore**<sup>®</sup>  
Shop • Donate • Volunteer

# WE'RE OPEN

6720 N. US 31  
Whiteland, IN 46184  
317-535-6720

Thursday & Friday 10am – 6pm  
Saturday 10am – 4 pm

Drop Off Donations Accepted During  
Business Hours Only

Schedule a donation pick-up online at  
[www.habitatjohnsoncounty.org](http://www.habitatjohnsoncounty.org)  
Or call 317-535-6720.

## Please Don't **DUMP!**

We recently installed cameras at the ReStore due to dumping after business hours.

As much as we appreciate donations for our store, when people dump unsellable items, it costs money to dispose of them which takes money away from Habitat's mission.

Please be aware drop off donations are only accepted during business hours. Thu/Fri 10am-6pm & Sat 10am-4pm.

For the safety of our customers, donors and staff, we will be practicing social distancing, using directional aisles and only allowing fifteen customers in at a time.  
Please note, we do NOT have public restrooms so plan accordingly.



# HABIGRAM



**Habitat**  
for Humanity  
of Johnson County

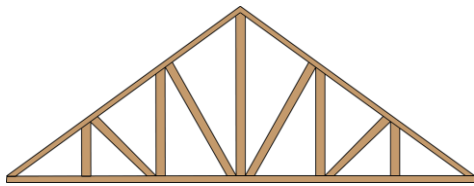
*The Quarterly Newsletter For All Things Habitat*

## ATTENTION: 2020 BUILD POSTPONED

Due to the recent situation with Covid19, we have postponed the fall 2020 build until spring 2021. The health and well being of our volunteers, donors, families and staff are our number one priority.

If you would like to contribute to this build, please visit our website at [www.habitatjohnsoncounty.org](http://www.habitatjohnsoncounty.org) or if your organization would like to participate, please contact Lee Ann Wilbur at 317-530-9222 for more information.

We will get through these difficult times and build together again.



**RAISE THE  
ROOF**

*Community Build*

